



## Investigator<sup>II</sup> Analytics for better insight into your business

Investigator<sup>II</sup> provides the business professional with the tools to analyse, forecast and monitor performance. Easy to use and quick to learn, it will significantly improve your decision making and planning by giving you better insight into your business. Your actions will add to your company's bottom line.

Investigator<sup>II</sup> uses the very latest in browser and p.c. technology to deliver the best analysis and forecasting solution to wherever you might be...working in the office or from home, at the production plant or warehouse, or working on the move; anywhere that has an internet connection.

Investigator<sup>II</sup> is fast and practical to deploy, is designed to dovetail with your existing computer systems and to offer a fast return on investment. The modules of Investigator, including Analyser<sup>RT</sup>, Forecast<sup>FL</sup> and Market Watch, are individually strong, but together they provide a highly integrated decision support and planning environment.

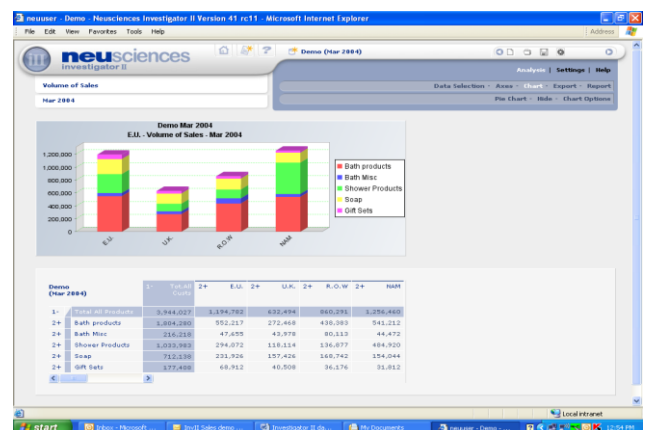
### Analysis and Forecasting for Demand Planning

Investigator's Analyser<sup>RT</sup> module draws on whatever internal sales or external market research data you choose, to provide comprehensive data analysis facilities in support of your decision making process.

The same data sources and integrated views are used in the Forecast<sup>FL</sup> module to support your business planning and sales forecasting needs.

Optimiser complements Investigator<sup>II</sup>, building on the consolidated demand forecast and using it to plan optimum inventory levels always ensuring that you have the correct amount of stock to meet expected demand. Optimiser allows you to consolidate your product planning around efficient batch sizes whilst at the same time ensuring customer service levels are being maintained.

Investigator<sup>II</sup> is growing. Our product development plans combine the practical needs of organisations with our vision of leading edge information systems. Our commitment to continual development will ensure that Investigator<sup>II</sup> will meet your needs today and into the future.



### Analys<sup>RT</sup>

is the core module within Investigator<sup>II</sup> providing comprehensive data analysis and investigation tools. The facilities available in Analyser<sup>RT</sup> apply equally thoroughly to forecast and market data as to sales history. Analyser<sup>RT</sup> includes the following functions to make it an analysis platform of choice for managers and their teams:

- Real time data
- Easy navigation around multi-fact data
- Personal settings
- Time and calendars
- Pivot tables and paging
- Calculated facts
- Multiple data sets
- Filtering and ordering

### Forecast<sup>FL</sup>

is the forward-look forecasting module in Investigator<sup>II</sup>. Whichever way your organization forecasts demand: centrally in a planning department, collaboratively across teams, using manual returns, predicting from historic data or a mix of these, Forecast<sup>FL</sup> provides the following tools to help perform this key business process consistently and feedback to help improve it over time:

- Collaboration
- Bubble-up consolidation and trickle down
- Advanced forecasting methods
- Tracking of forecast performance
- Combining manual and numeric inputs
- Fixing items
- Budgets, plans and targets

### Unified Views

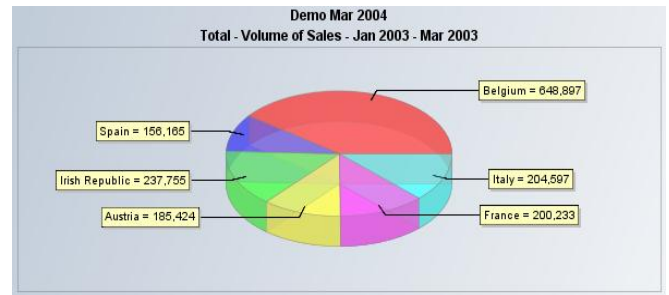
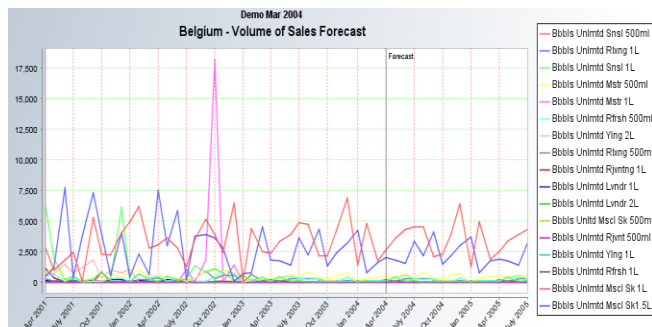
Whether you are looking at history, plans, budgets or forecasts, comparing past performance with current activity, looking at your products versus the competition, reviewing your figures against another department's projections, you get the same consistent views and hierarchies.

### Multiple facts and hierarchies

While the core data is based on product sales volumes by channel over time, the range of other facts, whether inputs (such as stock levels or costs) or calculated (such as average values, difference from plan, percentage market share) are limited only by what is conceived to be needed.

### Flexible reporting

All screens are HTML pages so tables and graphs can be printed as reports. Each user can create and save their own report templates and data is easily exported to applications such as Excel.



### Collaborative working

Each user can have their own what-if? working space and file reports as part of a collaborative planning session. While they can edit any data, only agreed and approved reports are published. Multiple plans and histories, for use by different departments, can be generated without compromising the accepted corporate or management view.

### Real-time agility

All facts are calculated on request, so as soon as new data at the single transaction level is input, it is available to users. Instant updates mean you always have the latest information to act upon. And as access is through a web browser you can get the information instantaneously wherever you are.

### Security configured for user groups

As well as different levels of user, it is possible to permit users to have access only to data relevant to their sphere of operations.

### Investigator<sup>II</sup> system architecture

Investigator<sup>II</sup> is a web server application accessed via standard browsers, using HTTP, or SOAP. As well as manual input, data can come from file feeds, automatic feeds linked to ERP systems, transaction systems and other sources. Only base data is stored using SQL Server. All calculated facts are performed on request. This makes the system capable of real-time operating. The application comes with Analyser<sup>RT</sup> as standard and additional capability, such as Forward Look forecasting and Market Watch for external market data come as options. Backing these up are administration facilities for configuration, security and management.

### Capacity & performance

The application can accommodate an unlimited number of hierarchies or facts. Performance is dependent upon hardware configuration. This should be configured according to the number of users and extent of the data to be held.

### Minimum Requirements

#### Web Server:

Pentium processor > 1.5GHz, 512Mb RAM, 40Gb disc, running SQL server, Apache Tomcat and Java VM1.5.

Note: database can be hosted on the web server or on a separate database server as required.

#### Client:

PC with Internet browser Explorer 6 or equivalent, internet or VPN network connection

### Contact us:

Solutions4Planning Limited  
 Garrick House  
 138 London Road  
 Gloucester, UK  
 GL1 3PL  
 Tel : +44(0)845 644 6803  
 Email : info@solutions4planning.com